

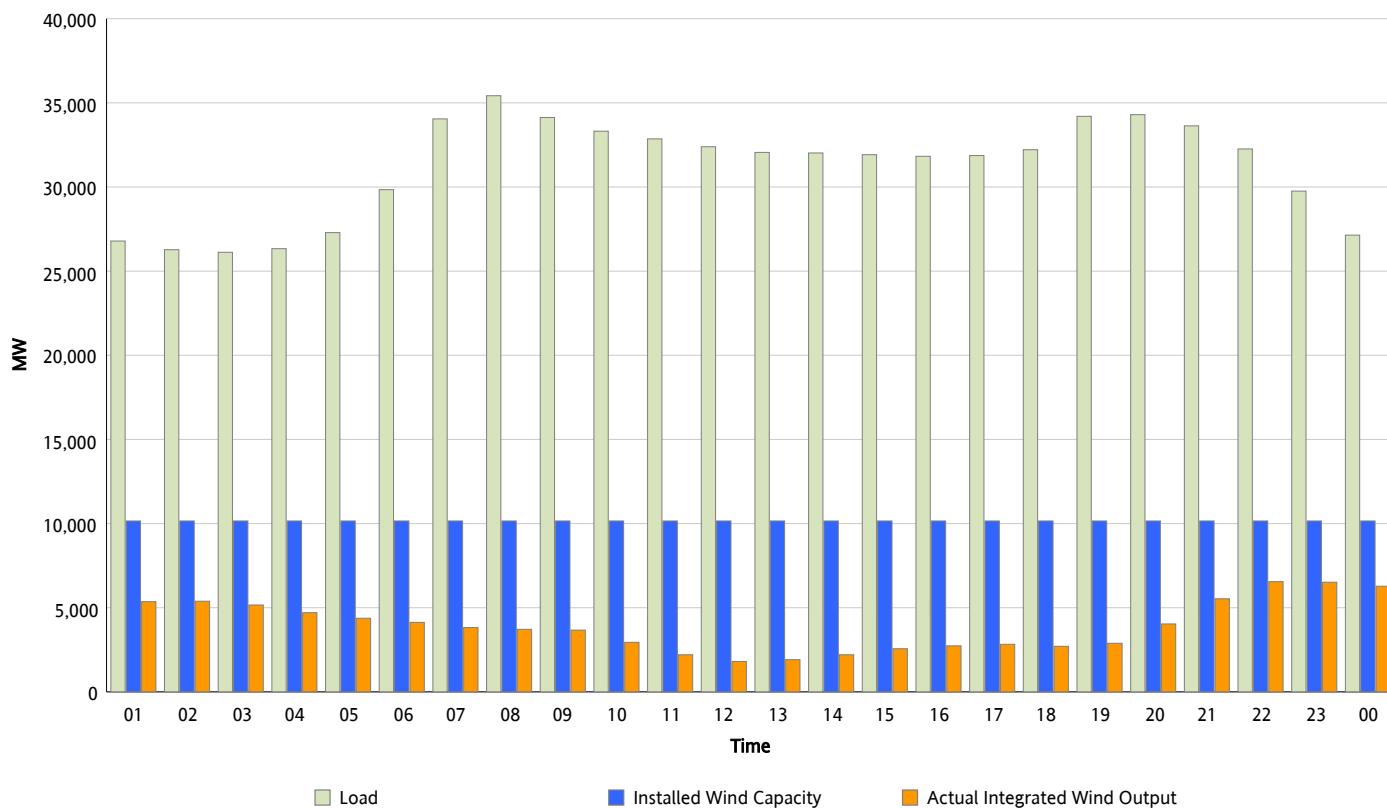


## ERCOT Grid Operations

### Wind Integration Report : 01/23/2013

Peak Load	35,422 MW
Load Peak Hour (HE)	08
Wind Over Peak	3,718 MW
Wind Record 12/25/12	8,638 MW
Max Wind Value*	6,798 MW
Wind Peak Time	21:55
Wind Integration %	21.67 %

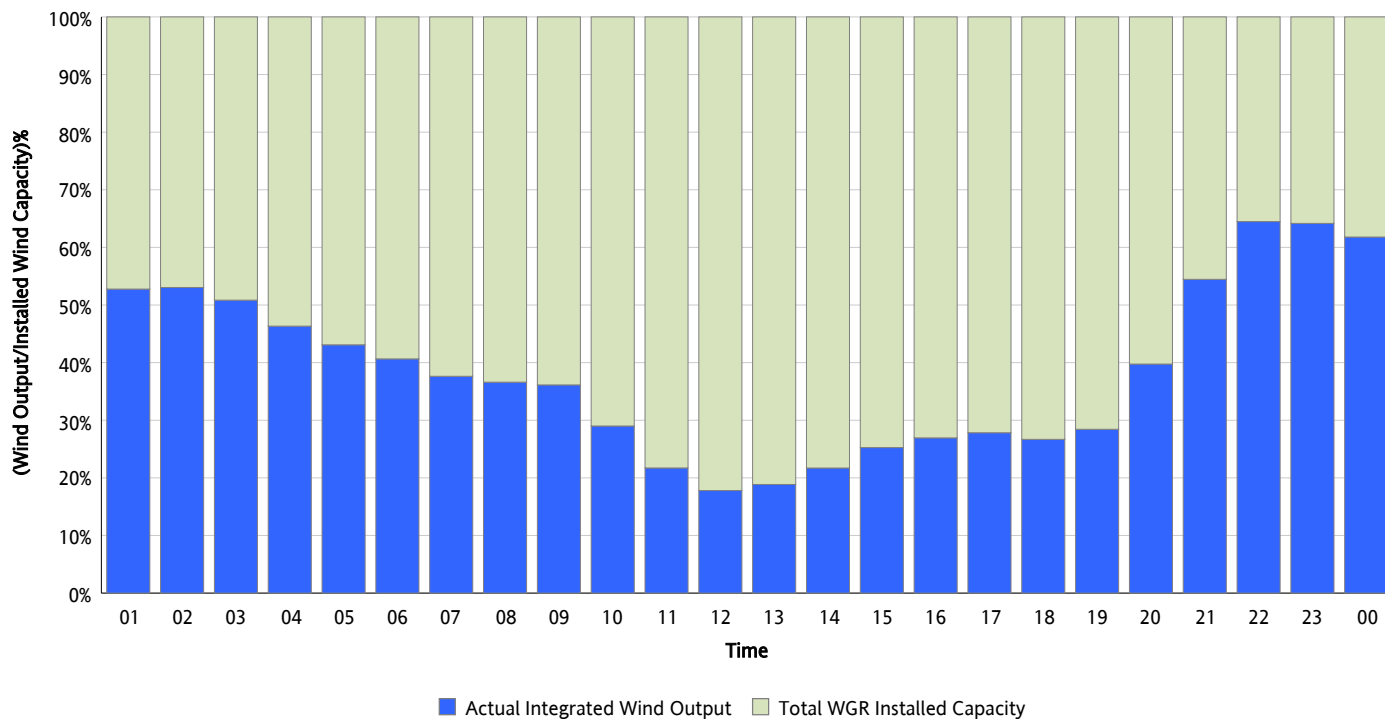
**Hourly Average Actual Load vs. Actual Wind Output**  
01/23/2013



\* Wind Record and Wind Max represent instantaneous values and the rest of the values are integrated over the hour

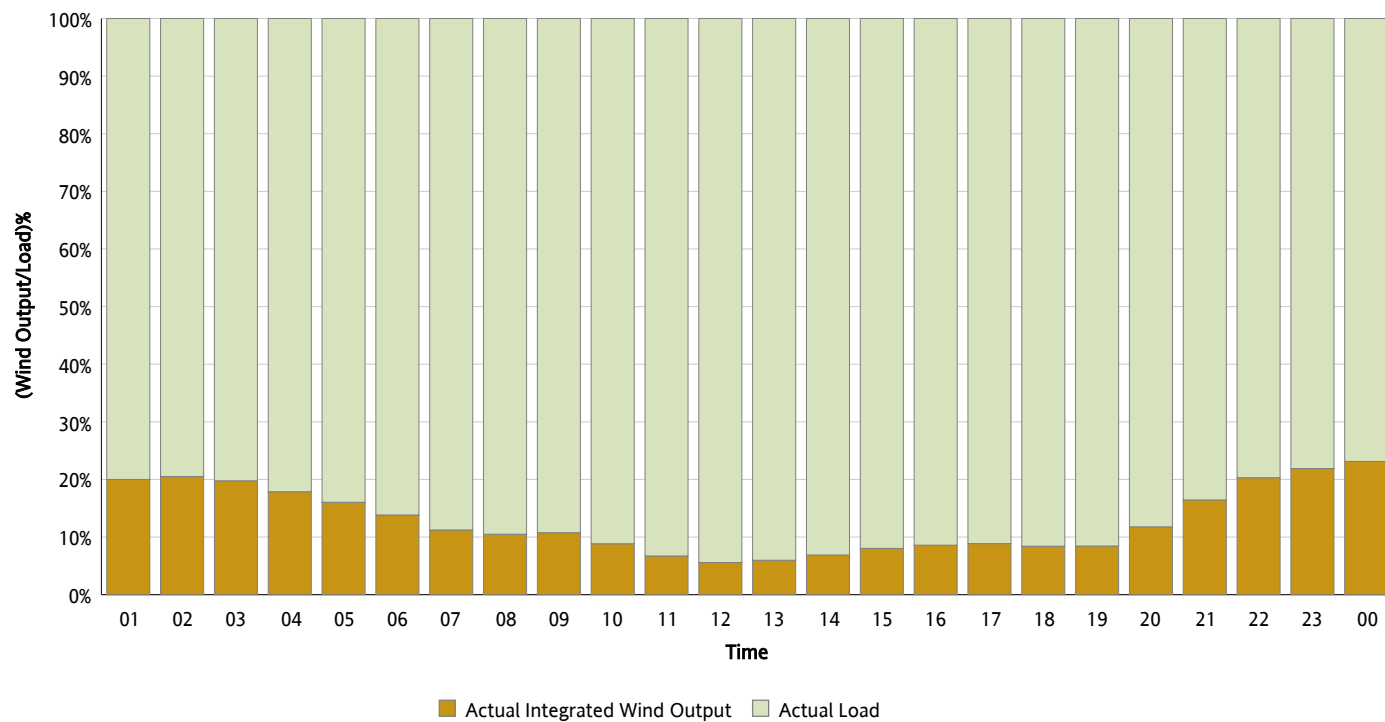
## Actual Wind Output as a Percentage of the Total Installed Wind Capacity

01/23/2013



## Actual Wind Output as a Percentage of the ERCOT Load

01/23/2013



## ERCOT Load vs. Actual Wind Output

01/16/2013 - 01/23/2013

